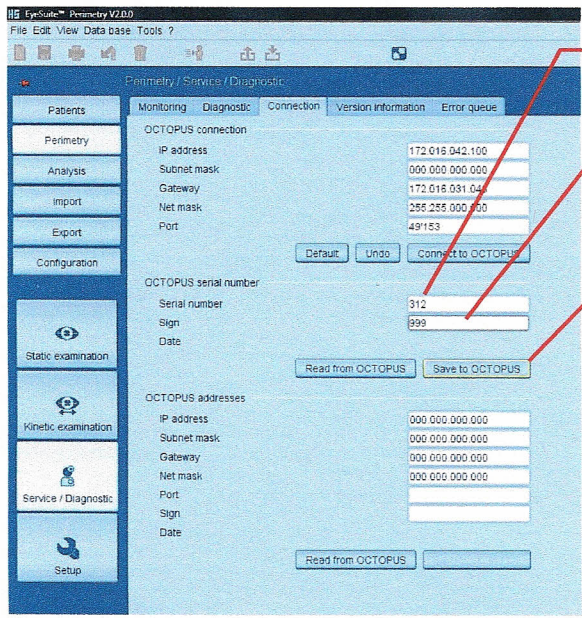


Reassembly

! **NOTE:** When replacing a processor board it is important to re enter the serial number or else the OCTOPUS will not support any options that have been included!

- Parameters are stored in the brightness measurement boards, therefore no values have to be re entered except for the serial number. This is only necessary when replacing the processor board. Entering the serial no. is simple. In the EyeSuite software go to: Perimetry – Service/ Diagnostic – Connection and then enter the serial no. See Fig. 7-8.



Enter the serial no. of the OCTOPUS 900, then press enter.

Enter a number such as 999 as a sign, then press enter.

Save to Octopus as soon as this symbol has been activated. (It is only activated once a serial number and sign has been entered).

Fig. 7-8

Reassemble in reverse order to removal.

Check

- Are all connectors attached correctly?
- After reassembly, run the 'general test' with the EyeSuite software to verify faultless operation.

Removal of the light controller board (1804205)

- Remove the back cover (1803154) by removing the 4 torx screws, M5x16 with a torx screwdriver size 25. (See chapter 7.2)
- Remove the cable leading to the light sources stimulus, background and fixation target (see Fig. 7-6 Mainboard and Light Controller Board).
- Pull the light controller board off the 4 plastic knobs (in each corner) as well as removing the processor module from the top 2 plastic knobs. The light controller board can now be removed easily by pulling it out of the connector on the processor module by pulling in an upward movement.

Reassembly

Reassemble in reverse order to removal.