

# INSTALLATION AND OPERATING INSTRUCTIONS

OWNERS MANUAL

## **MODEL 2000 PROCEDURES CHAIR**



**HS** RELIANCE  
INTERNATIONAL

3535 Kings Mills Road  
Mason, Ohio 45040-2303  
1-800-735-0357 (Customer Service)  
1-800-735-0358 (Technical Service)  
(513) 398-3937  
[Http://www.reliance-medical.com](http://www.reliance-medical.com)

SERIAL NUMBER

For your future reference, mark the serial number  
in the space provided.



# INSTALLATION AND OPERATING INSTRUCTIONS

## RELIANCE® MODEL 2000 PROCEDURES CHAIR

### 1. INTRODUCTION

1.1. This manual contains information applicable only to the Reliance® Model 2000 Procedures Chair.

1.2. Whenever you see the symbols shown below, heed their instructions! Always follow safe operating and maintenance practices.

**“WARNING”- THE WARNING SYMBOL IDENTIFIES SPECIAL INSTRUCTIONS OR PROCEDURES WHICH, IF NOT CORRECTLY FOLLOWED, COULD RESULT IN PERSONAL INJURY.**

**“CAUTION”- This caution symbol identifies special instructions or procedures which, if not strictly observed, could result in damage to or destruction of equipment.**

**“NOTE”- Note indicates points of particular or additional information.**

1.3. Should your product not perform properly, or if you have any questions concerning the use and care of any Reliance® product, contact the Reliance® Distributor where you purchased this product, or contact the Technical Service Department, Reliance® Medical Products, Inc., 3535 Kings Mills Road, Mason, Ohio 45040-2303, or call (800) 735-0358.

NOTE: Always have the model number and serial number available before contacting Reliance® or your authorized Reliance® Distributor.

### 2. INSTALLATION

#### 2.1 Unpacking

2.1.1 Open the shipping carton carefully and record any shipping damage to the carton or to the contents.

2.1.2. Remove all contents from the shipping carton and note that models with a backrest are packed with the backrest removed.

2.1.3. To level the chair, tilt chair on its side and screw all four hex shaped levelers in all the way. Position the chair in its proper location. Note if any of the levelers do not touch the floor. Tilt chair and screw out appropriate leveler approximately half the distance required for it to reach the floor. Now adjust the leveler diagonal from the first one adjusted until all four levelers are in contact with the floor.

2.1.4. Plug the power cord into a grounded 115 volt, 60 Hertz electrical outlet capable of supplying at least 4.0 amperes.

#### 2.2. Assembly

2.2.1. To assemble models with adjustable tilting backrests refer to Figure 1. Place the support bar (Item 3) into the back support mount (Item 4) and secure it with the thumb screw (Item 5).

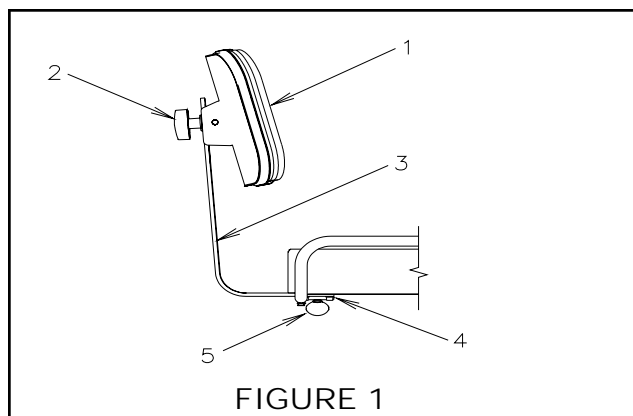


FIGURE 1

### 3. OPERATING INSTRUCTIONS

#### 3.1. Seat Height Adjustment

3.1. The electric powered chair lift is controlled with a footswitch. To raise the chair press the side of the footswitch with the raised chair symbol (the right side). To lower press the side of the switch with the lowered chair symbol (the left side).

NOTE: — This chair lift is equipped with a thermal safety device to protect internal parts from overheating due to excessive use. If the lift should cease operating after many consecutive operations, wait approximately 45 minutes for internal components to regain normal temperature.

#### 3.2. Rotation

3.2.1. The chair top may be rotated a full 360°. The lock, which prevents rotation is controlled by a hand lever with a black handle located below the seat and on the patient's right side.

Push the lever down to release the lock and lift to engage the lock.

#### 3.3. Seat Back Adjustment

3.3.1. The backrest can be adjusted vertically and horizontally.

3.3.2. To adjust the backrest vertically loosen the black knob (Item 2). Move the backrest to the desired position and tighten the knob.

3.3.3. To adjust the backrest horizontally loosen the thumb screw (Item 5 ). Move the back support bar (Item 3) to the desired position and tighten the thumb screw securely.

### TROUBLESHOOTING GUIDE

PROBLEM	PROBABLE CAUSE	SOLUTION
Chair will not raise or lower	<ol style="list-style-type: none"> <li>1) Power cord unplugged from unit.</li> <li>2) Power cord unplugged from outlet.</li> <li>3) Footswitch cord unplugged from unit.</li> <li>4) Motor became hot from repeated use in a short time span.</li> </ol>	<ol style="list-style-type: none"> <li>1-3) Check external electrical connections.</li> <li>4) Wait 45 minutes and try again.</li> </ol>
Too much drag on swivel	<ol style="list-style-type: none"> <li>1) Swivel bolt too tight.</li> </ol>	<ol style="list-style-type: none"> <li>1) Remove seat mounting screws and loosen swivel bolt.</li> </ol>
Too little drag on swivel	<ol style="list-style-type: none"> <li>1) Swivel bolt too loose.</li> </ol>	<ol style="list-style-type: none"> <li>1) Remove seat mounting screws and tighten swivel bolt.</li> </ol>
Chair Top wobbles	<ol style="list-style-type: none"> <li>1) Seat mount screws loose</li> <li>2) Swivel bolt too loose.</li> </ol>	<ol style="list-style-type: none"> <li>1) Tighten screws.</li> <li>2) Remove seat and tighten bolt.</li> </ol>
Whole Chair wobbles	<ol style="list-style-type: none"> <li>1) Leveler out of adjustment.</li> </ol>	<ol style="list-style-type: none"> <li>1) Adjust levelers according to the installation instructions.</li> </ol>

3.1 PARTS LIST 1291792  
(Figure 2 See Page 6)

ITEM	PART NO.	DESCRIPTION
1	0709399	Cap Screw-1/2-13 x 3/4
2	1301185	Disc
3	1300999	Thrust Washer
4	1300899	Thrust Bearing
5	1443382	Seat Support Ass'y
6	0610099	Drive-Loc Pin 1/4 O.D. x 3/4
7	1354292	Lock Handle Ass'y
8	1353799	Lock Screw
9	1353699	Lock Shoe
10	0725999	Set Screw- 1/4-20 x 3/4
11	1603492	Lift Ass'y
12	1573699	Lift Motor
13	1603592	Foot Switch / Power Cord Ass'y
14	1587399	Base Cover
15	1469485	Base Plate
16	0728299	Lock Washer - 1/4
17	0569599	Cap Screw-So. Hd. - 1/4-20 x 3/4
18	1302295	Leveler
19	0396299	Washer, Spring
20	1469295	Swivel Rotor
21	0789199	Screw- 10-24 x 3/8
22	1603399	Cable Clamp
23	1014599	Label, Footswitch
24	1307999	Thrust Washer
25	0266299	Velcro-loop
26	0293299	Shoulder Screw-5/16 x 1- 1/4
27	0722899	Set Screw-1/4-20 x 3/8
28	0728199	Lock Washer-#10

TO ORDER COMPLETE BASE ASSY.  
USE P/N 1291792

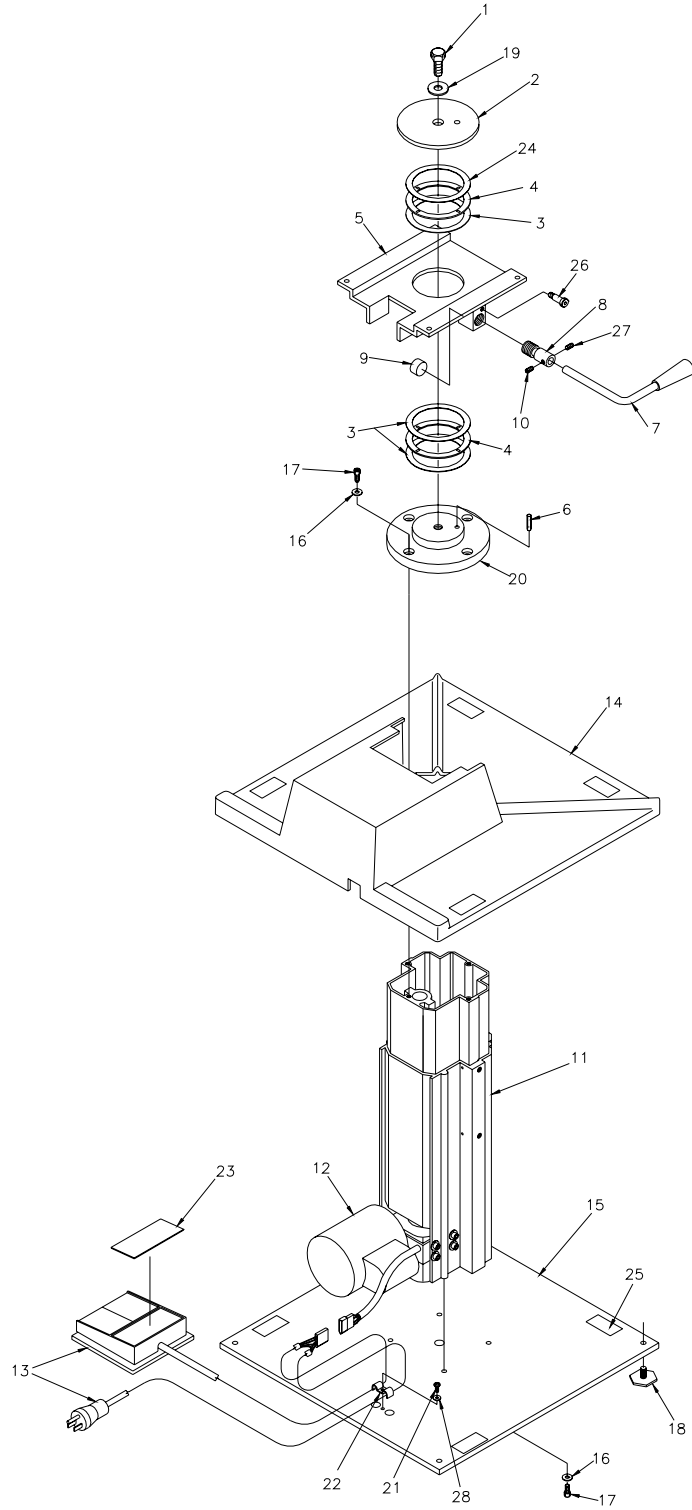


FIGURE 2  
CHAIR BASE ASSEMBLY

3.2 PARTS LIST 1292292  
(FIGURE 3)

ITEM	PART NO.	DESCRIPTION
1	1293073	Uph. Seat*
2	1984280	Hand Grip
3	1984180	Footrest Bar
4	0817143	Back Bracket Ass'y
5	1293173	Uph. Back*
6	0313381	Back Support
7	1987599	Knob
8	1025899	Washer-Rubber
9	1025799	Washer-Plastic
10	1288786	Back Support Mount
11	0781699	Thumb Screw-3/8-24

TO ORDER COMPLETE TOP ASSY.  
USE P/N 1292292

\*PLEASE SPECIFY UPH. COLOR WHEN ORDERING

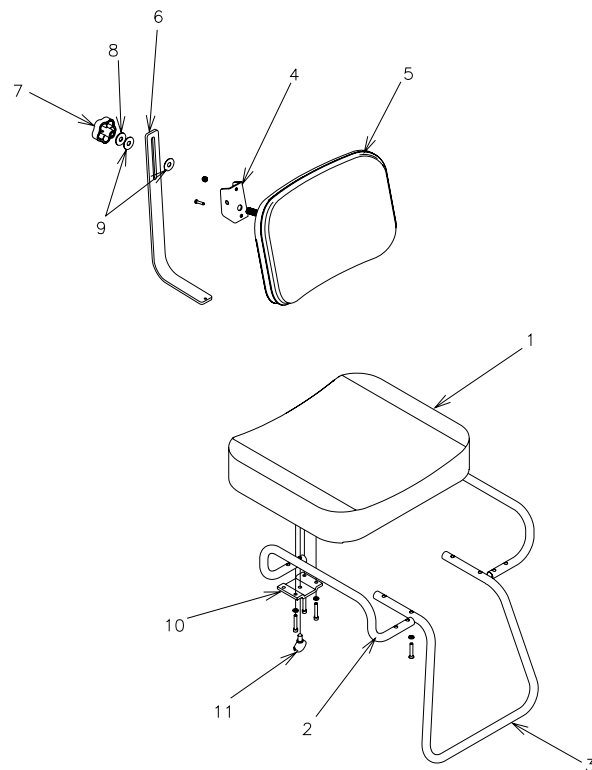
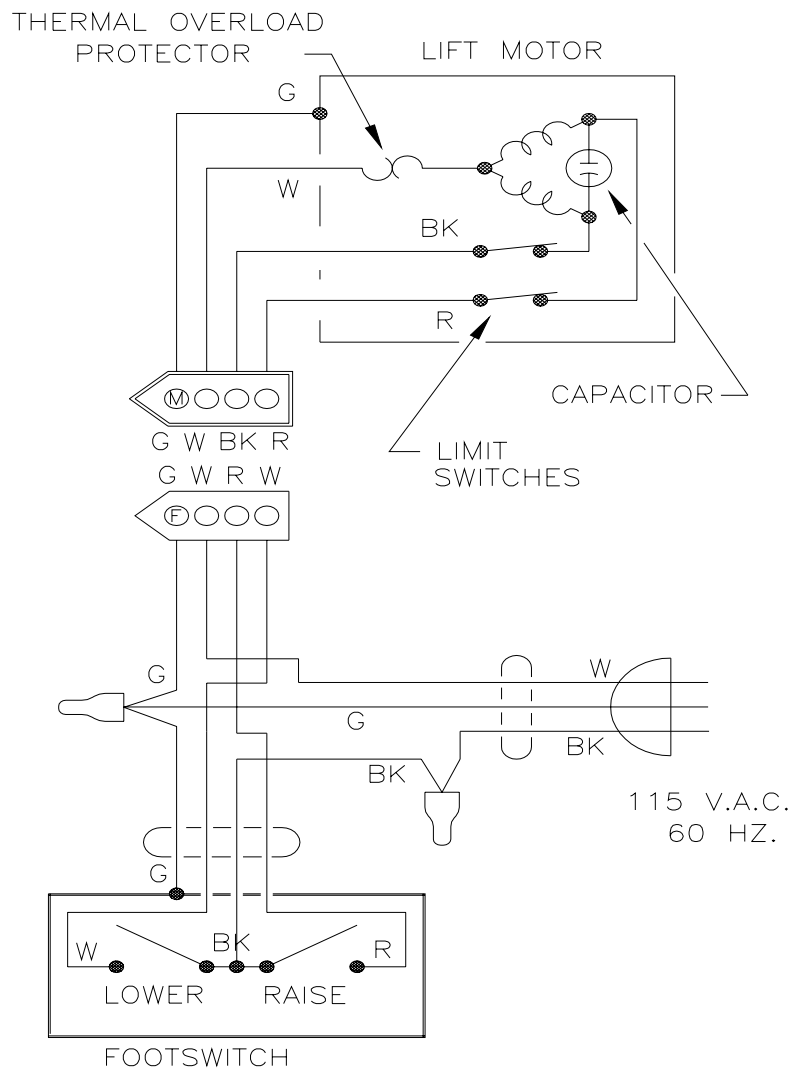


FIGURE 3  
CHAIR TOP ASSEMBLY



WIRING DIAGRAM-2000 CHAIR

**(NOTES)**

**(NOTES)**

## LIMITED WARRANTY

The Reliance<sup>®</sup> Product must be used only for the purposes and in the manner described in the literature distributed with the product. The products are warranted against defective materials and workmanship for the period set forth in the warranty provided with each product. Products or parts thereof will be repaired or replaced as required at Reliance<sup>®</sup> Medical Products, Inc. Such repair or replacement shall be the sole remedy under this warranty. This warranty extends only to the original purchaser from an authorized Reliance<sup>®</sup> dealer and is subject to the following conditions:

1. The warranty card must be completed and returned to Reliance<sup>®</sup> Medical Products, Inc. within two (2) weeks from the date of installation.
2. Installation and servicing of the products must be performed by trained Reliance<sup>®</sup> equipment dealer service personnel in accordance with the appropriate instructions manual for the products.
3. The products have not sustained breakage or other type damage due to accident or misuse.
4. This warranty will not apply to Reliance<sup>®</sup> products which have had the serial number removed, altered or effaced.

**EXCEPT FOR THE EXPRESS WARRANTY SET FORTH ABOVE, RELIANCE<sup>®</sup> DOES NOT GRANT ANY WARRANTIES, EITHER EXPRESS OR IMPLIED, INCLUDING IMPLIED WARRANTIES OF MERCHANTABILITY OR FITNESS FOR A PARTICULAR USE.**

Reliance<sup>®</sup> Medical Products neither assumes nor authorized any person to assume for it, any other liability in connection with the sale and use of its products.

**REMEDIES ARE LIMITED EXCLUSIVELY TO REPAIR OR REPLACEMENT OF PARTS. RELIANCE<sup>®</sup> MEDICAL PRODUCTS, INC. EXPRESSLY DISCLAIMS LIABILITY FOR INCIDENTAL OR CONSEQUENTIAL DAMAGE RESULTING FROM THE USE OF THE EQUIPMENT.**

Claims covered by this warranty will be honored when presented within one (1) month from discovery of a defect.



3535 Kings Mills Road  
Mason, Ohio 45040-2303  
1-800-735-0357 (Customer Service)  
1-800-735-0358 (Technical Service)  
(513) 398-3937  
[Http://www.reliance-medical.com](http://www.reliance-medical.com)

P/N 12918 REV F  
© Copyright 2001  
Printed in U.S.A.  
Revised 03/04-6232