

# Replacing the Actuator (Handle) & Lock Gear Assembly

Tools required: 1/8 Hex Wrench, 3/32 Hex Wrench, Small punch (1/4 in.), Hammer

## REMOVAL

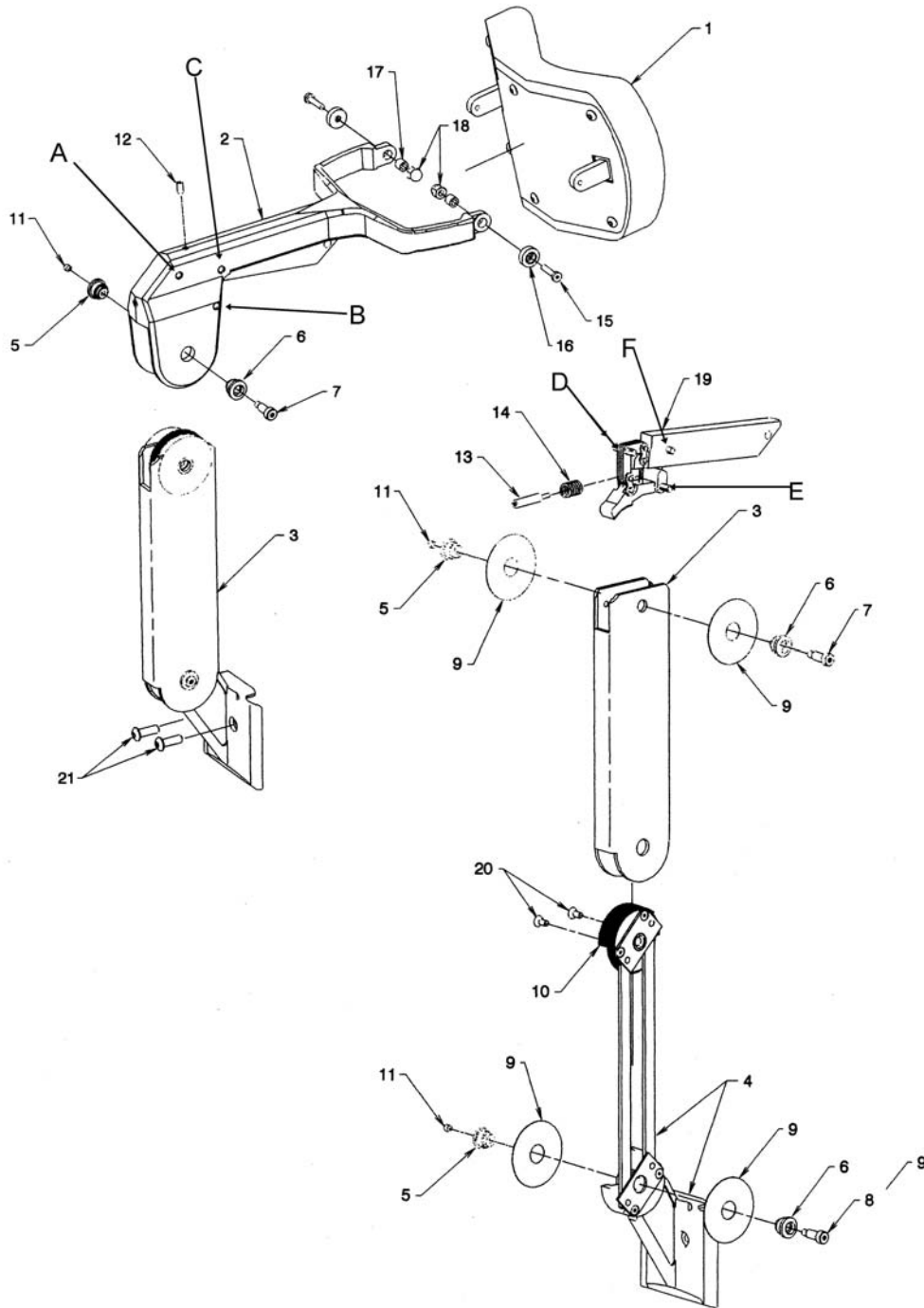
1. Using a 3/32 hex wrench loosen the set screw located on the upper joint. (Item #11)
2. Using a 1/8 hex wrench remove the shoulder screw (Item #7) located on the opposite side of the set screw.
3. Remove the left and right pivot cap (Item #5 & #6). Note: caps may have to be tapped out.
4. Separate the top section of the headrest with pad from the bottom section.
5. Laying the top section on a sturdy surface, use the 1/4" punch to punch out 3 pins holding the actuator and lock gear assembly in place (Items A, B, C). Note: The pins will only punch out in one direction. One must place the punch against the non ribbed flat side of the pin. All pins are installed in the same direction.
6. Remove the actuator assembly, being careful not to loose the spring located in the top section.

## INSTALLATION

*Check to make sure your spring is in place before installing the actuator and lock gear assembly.*

1. Insert the actuator and lock gear assembly (Item #19) into the yoke assembly (Item#2) as shown in diagram.
2. Line up holes A (top section) & D (actuator assembly) and place short pin provided smooth end first.
3. Push the small pin through until it stops and complete installation with the small punch and hammer until pin is flush with casting.
4. Line up holes B (top section) & E (actuator assembly) and repeat steps 2 and 3.
5. Line up holes C (top section) & F (actuator assembly) and repeat steps 2 and 3.
6. Line up the top section with the bottom section.
7. Replace the left and right pivot caps.
8. Insert the shoulder bolt and tighten with a 1/8 hex. Tighten until there is no or minimal shake but not too tight so the headrest moves freely and locks.
9. Once the shoulder bolt is adjusted correctly, hold the adjustment by tightening the set screw
10. Make sure black indicator dot on actuator is full exposed when head rest is locked. If not turn the set screw located at the top of the upper section counter clockwise until dot is fully exposed.

# Replacing the Actuator (Handle) & Lock Gear Assembly



## **Replacing the Actuator (Handle) & Lock Gear Assembly**